

PT100 MODBUS TEMPERATURE HEAD TRANSMITTER THM501



INSTALLATION GUIDE

IG_INHD_THM501_E01A

PT100 TEMPERATURE HEAD TRANSMITTER THM501

INSTALLATION GUIDE

Table of contents

step
01

CONNECT AND CONFIGURE THM501 TEMPERATURE HEAD TRANSMITTER

Pages 3 to 6

step
01

CONNECT AND CONFIGURE THM501 TEMPERATURE HEAD TRANSMITTER

DOWNLOAD AND INSTALL "TEKON CONFIGURATOR" FREE SOFTWARE FROM TEKON ELECTRONICS WEBSITE

01

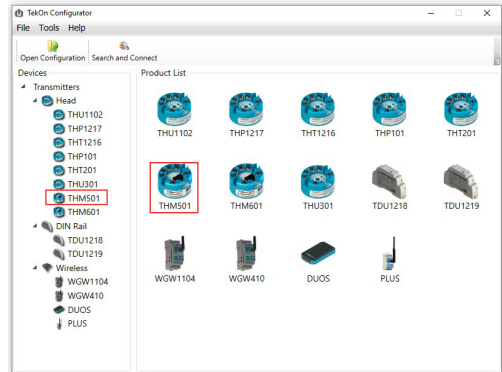
Execute **Tekon Configurator** software.



02

Select the **THM501** transmitter from the main window.

Note: if you click on the name of the product, a browser window will open on the product page on Tekon Electronics website.



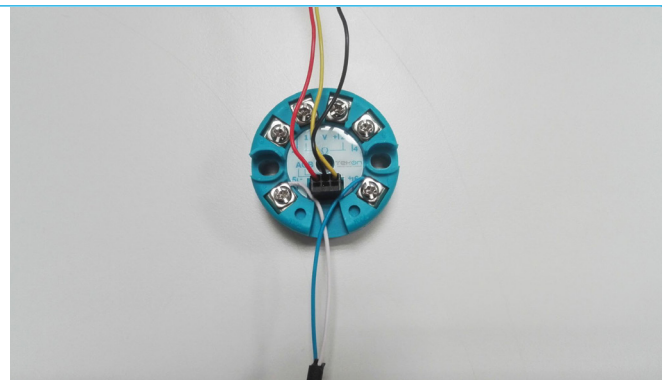
03

Make sure that the equipment is connected to the power supplier.



04

Make sure that the equipment is connected with the computer through a **RS485 TO USB CONVERTER CABLE** or similar equipment.

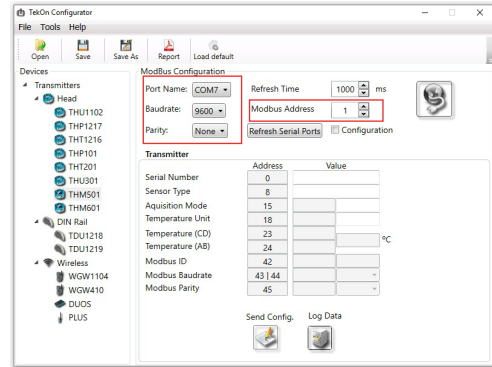


step
01

CONNECT AND CONFIGURE THM501 TEMPERATURE HEAD TRANSMITTER

05

Verify **THM501** default configurations: Modbus Address; Baud rate; Parity; Data bits and Stop bits.

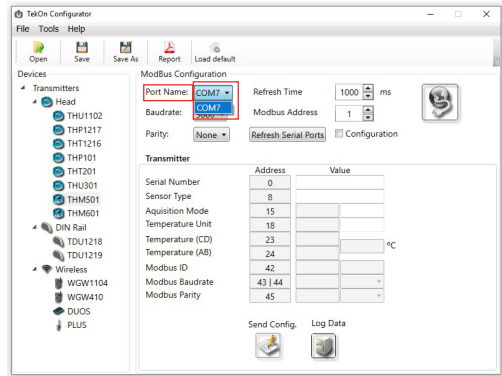


06

Select the serial port to which you have connected the **THM501** transmitter.

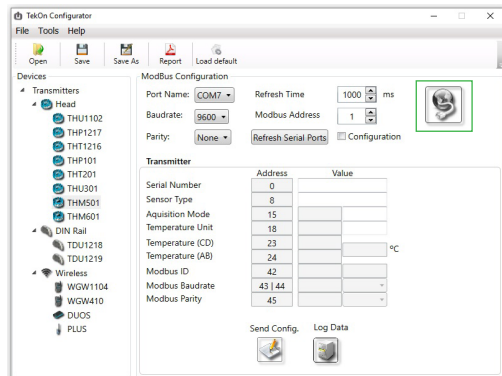


NOTE: The serial port depends on the operating system.



07

Connect to the **THM501**.



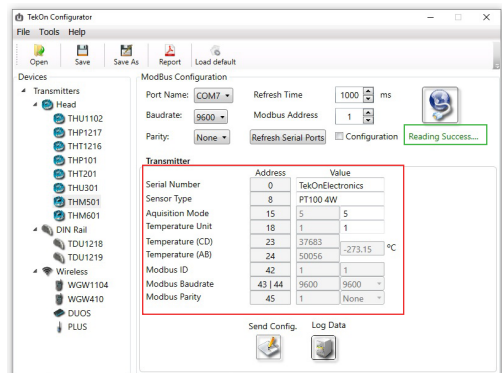
08

After successful connection, the message "Reading Success..." appear below the connection button.

The fields regarding to the transmitter variables are filled with their values.



NOTE: If you do not connect any device to the transmitter, the temperature value will be -273.15° C.



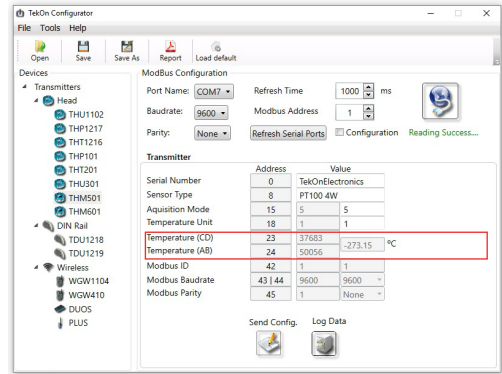
step
01

CONNECT AND CONFIGURE THM501 TEMPERATURE HEAD TRANSMITTER

09

Read the temperature value using the **Modbus** protocol. The value of temperature is 32-bit format and is available in register 23 accessed through the Read Holding Registers function (FC = 03).

The temperature value is in the **Double32 BA DC** formation type.



10

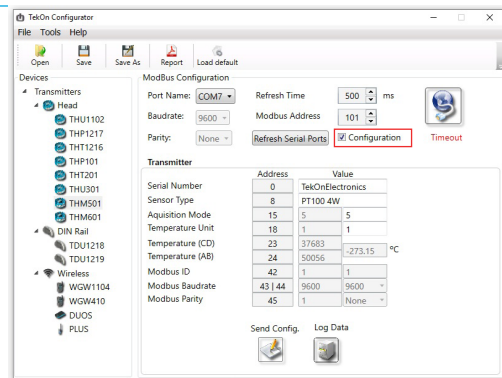
To edit the transmitter configurations, it is necessary to select the configuration mode.

Select the checkbox before **“Configuration”**.



NOTE:

The transmitter will be in Timeout, when you select the checkbox.

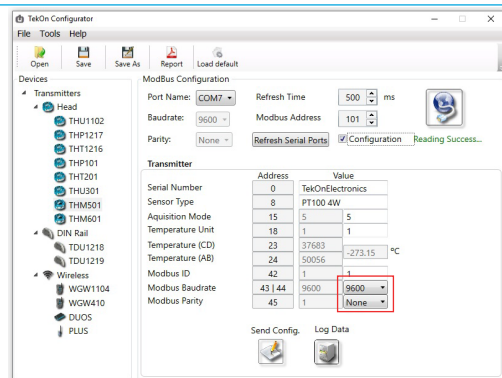


11

Perform a power cycle, disconnecting the power plug and connecting again.

12

If you succeed, the **Modbus ID**, **Modbus Baudrate**, **Modbus Parity** fields will be able to be edited.



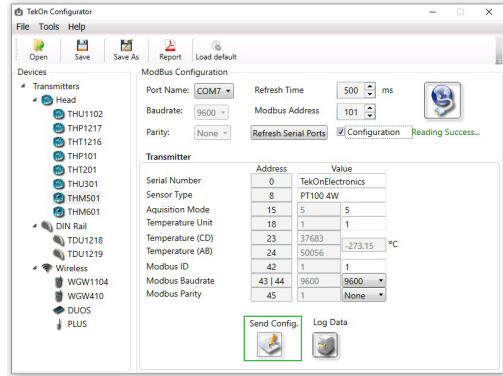
step
01

CONNECT AND CONFIGURE THM501 TEMPERATURE HEAD TRANSMITTER

13

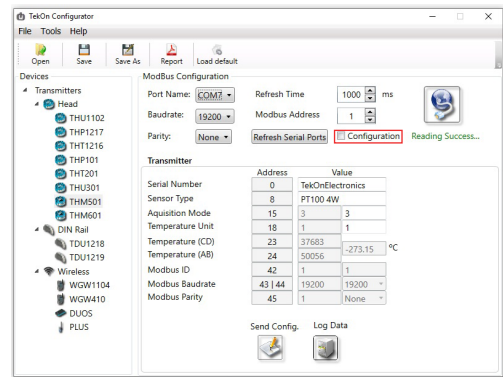
To validate the changes in configuration mode, you have to click in the **Send Config** button.

You must proceed this way to any single change.



10

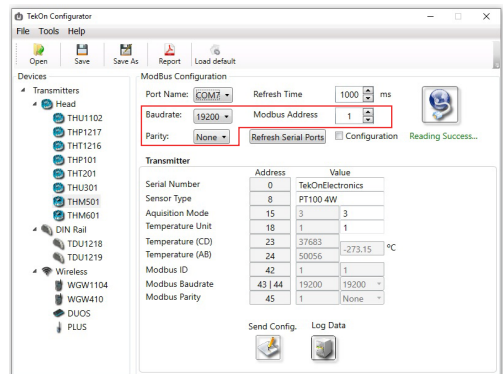
To exit **Configuration Mode**, unmark the checkbox behind.



11

Update the **Baudrate**, **Modbus Address** and **Parity** to the values that you have changed in **Configuration Mode** and perform a power cycle again.

The changes will be enable when the message **“Reading Success...”** appears below the Connection button.



TEKON ELECTRONICS
a brand of Bresimar Automação S.A.

Quinta do Simão
3800-230 Aveiro
PORTUGAL

P.: +351 234 303 320
M.: +351 933 033 250
E.: sales@tekonelectronics.com

