



## UDS1100 Quick Start Guide

For the latest documentation, FAQs and  
firmware updates, visit [www.lantronix.com](http://www.lantronix.com)

LANTRONIX®



**UDS1100**

## **UDS1100**

### **QUICK START CONTENTS**

---

What's In the Box .....	2
Pinouts .....	3
IP Addressing .....	4
Connect .....	5
Install the Deviceinstaller GUI .....	5
Assign IP Address .....	6-9
Add the Unit to the Device List .....	10
Configure the UDS1100 .....	10
LEDs/Troubleshoot .....	11-12
Contact .....	13

## WHAT'S IN THE BOX

In addition to the UDS, the box contains the following items:

### POWER SUPPLY (DOMESTIC UNITS)

PART #	COMPONENT DESCRIPTION
520-079-R	Power cube, 110 VAC
500-163	Serial Cable
	CD
	Power Cord Restraint

### POWER SUPPLY (INTERNATIONAL UNITS)

PART #	COMPONENT DESCRIPTION
520-080-R*	Power cube, 100-240VAC, with international adapters
500-163	Serial Cable
	CD
	Power Cord Restraint

\* Not included with UDS1100 POE version

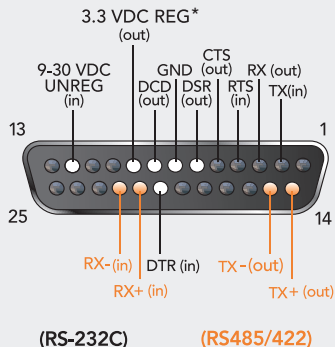
### DOCUMENTATION:

CD-ROM containing User Guide and software utilities and Quick Start Guide.

The UDS products allow serial devices to connect and communicate over an Ethernet network.

This Quick Start explains how to connect, configure, and troubleshoot your unit using a network connection and our DeviceInstaller software. For more detailed information or alternative configuration methods, refer to the User Guide on the CD.

## PINOUTS



*\*Not included in UDS1100 POE version*

## IP ADDRESSING

Your unit must have a unique IP address on your network. Two ways to assign an IP are described below.

### DHCP

Many networks use an automatic method of assigning an IP address called DHCP. If you are unsure whether your network uses DHCP, check with your systems administrator.

The UDS looks for a DHCP server when it first powers up. The UDS has acquired an IP address if the red LED stops flashing and the green Status LED is on continuously. You can use the DeviceInstaller software to search the network for the IP your unit has been assigned by the DHCP server and add it to the list of Lantronix devices on the network.

If the UDS does not acquire an IP, or you do not use DHCP, you must assign a fixed IP address.

### FIXED IP ADDRESS

In most installations, a fixed IP address is desirable. The systems administrator generally provides the IP address.

The IP address must be within a valid range, unique to your network, and in the same subnet as your PC. You will need the following information before you set up the unit as described in Assign IP Address.

IP Address:            \_\_\_\_\_  
Subnet Mask:        \_\_\_\_\_  
Gateway:            \_\_\_\_\_

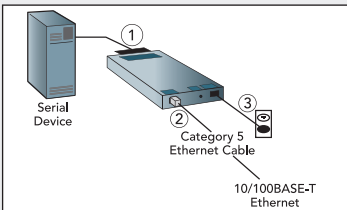
## CONNECT

Complete the following steps in order. Refer to the numbers in the figure below.

1. Connect a serial device to your unit.
2. Connect an Ethernet cable to the RJ45 port.
3. For standard UDS1100 units, supply power to your unit using the power supply that was included in the packaging.
4. For the UDS1100-POE version, power is supplied to your unit over the Ethernet interface using an 802.3af POE compliant power source such as a POE mid-span or POE Ethernet switch.

*Note: The required input voltage is 9-30 VDC (center +) or 9-24 VAC (1.5W maximum power required).*

### Ethernet, Power, and Serial Connections



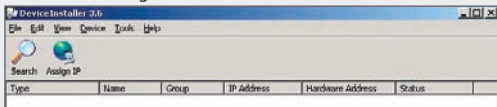
## INSTALL THE DEVICEINSTALLER GUI

1. Insert the CD into your CD-ROM drive. If the CD does not launch automatically:
  - a) Click the **Start** button on the Task Bar and select **Run**.
  - b) Enter your CD drive letter, colon, backslash, **Launch.exe** (e.g., **E:\Launch.exe**).
2. Click the **DeviceInstaller** button.
3. Respond to the installation wizard prompts.

## ASSIGN IP ADDRESS AND NETWORK CLASS

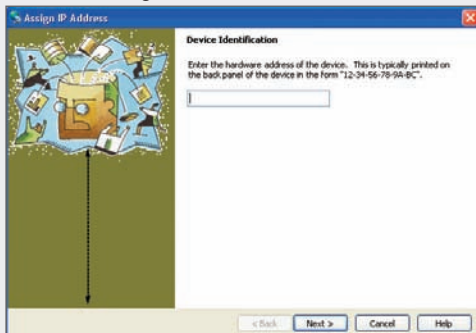
1. Click the **Start** button on the Task Bar and select **Programs** **┆** **Lantronix** **┆** **DeviceInstaller** **┆** **DeviceInstaller**. The DeviceInstaller window displays.

Figure 1. DeviceInstaller Window



2. Click the **IP** icon . The Device Identification window displays.

Figure 2. Device Identification

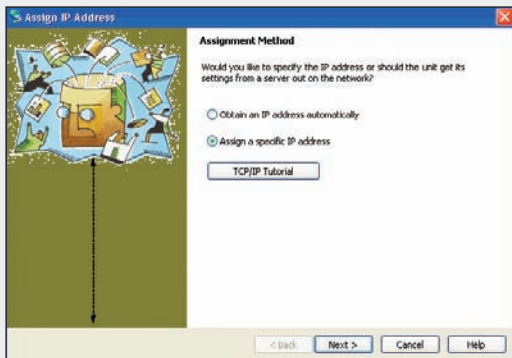




## ASSIGN IP ADDRESS CONTINUED...

3. Enter the hardware or Ethernet address of the device. The address is on the label on the underside of the unit.
4. Select **Assign a specific IP address** to assign a static IP address to the device, or select **Obtain an IP address automatically** to enable BOOTP, DHCP, or Auto IP on the device. Click **Next**.

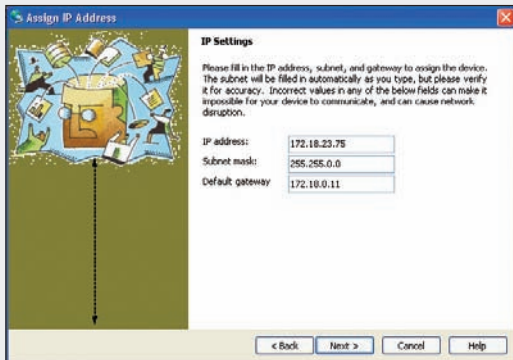
Figure 3. Assignment Method



## ASSIGN IP ADDRESS CONTINUED...

5. Enter the IP address, Subnet mask, and Gateway being assigned to the device in XXX.XXX.XXX.XXX format. Click **Next**.

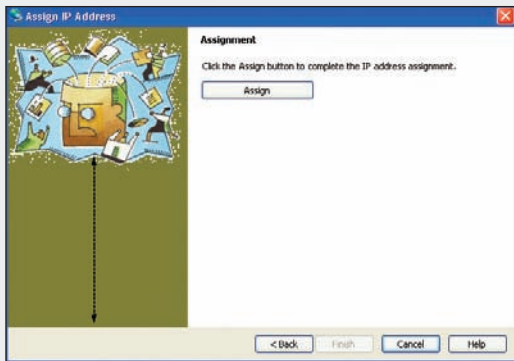
Figure 4. IP Settings




## ASSIGN IP ADDRESS CONTINUED

- Click the **Assign** button to finalize the IP assignment.

Figure 5. Assignment



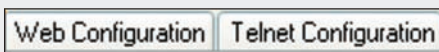
## ADDING THE UNIT TO THE DEVICE LIST

Now add the unit to the list of similar Lantronix devices on the network so that you can manage and configure it. To perform this step, click the **Search** icon . DeviceInstaller locates the unit and adds it to the list.

## CONFIGURATION

Once the UDS is in the device list, it can be configured.

1. Double-click the unit in the list. Details about the unit display.
2. Select one of the following tabs:



**Note:** For details about configuration settings, see the UDS User Guide.

## LEDS/TROUBLESHOOT

---

The unit contains the following LEDs:

- Power
- 10/100 Mb Link
- 10/100 Activity
- Diagnostics
- Status Channel 1

Simultaneously lit red and green LEDs means something is wrong. If the red LED is lit or blinking, count the number of times the green LED blinks between its pauses. The following table explains the LED functions.

<b>SERIAL LEDS</b>	<b>MEANING</b>
10/100 Mb Link steady green	<b>Valid network connection</b>
10/100 Activity blinking	<b>Network packets transmitting and receiving</b>
Diagnostic steady red and status blinking green	<b>3 blinks = Network controller error</b> <b>4 blinks = EEPROM checksum error</b> <b>5 blinks = Duplicate IP address on network</b>
Diagnostic blinking red and Status blinking green	<b>5 blinks = No DHCP response</b>
Status steady green	<b>Serial port not connected to network</b>
Status blinking green	<b>Serial port connected to network</b>

## CONTACT

---

For questions and technical support, please check our online knowledge base at **[www.lantronix.com/support](http://www.lantronix.com/support)**

For the latest documentation, FAQs and firmware updates, visit **[www.lantronix.com](http://www.lantronix.com)**

Lantronix Corporate  
167 Technology Drive  
Irvine, CA 92618  
Phone: (800) 526-8766  
Fax: (949) 450-7249

**[www.lantronix.com](http://www.lantronix.com)**



**UDS1100**